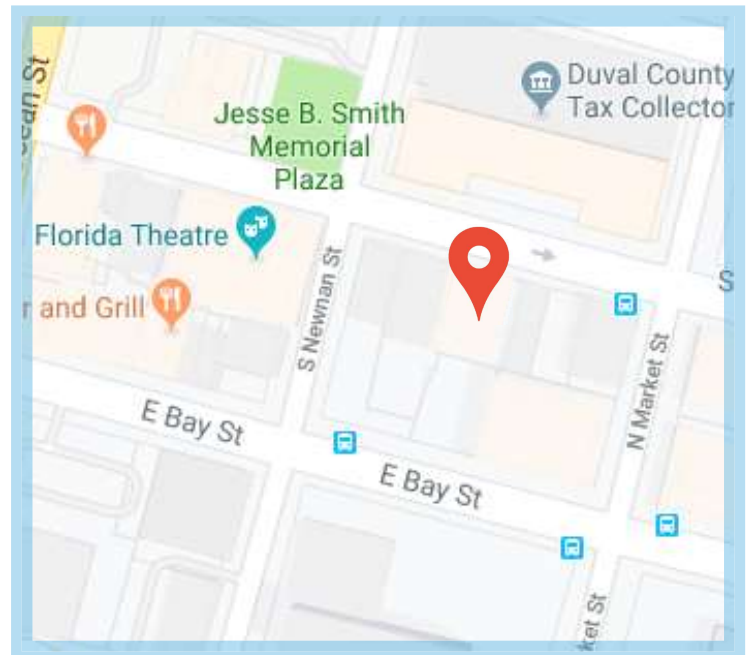




PROPERTY DESCRIPTION

- ▶ Loft Style Office Suite Available
 - ▶ Suite A: Approx. 1,555 SF
- ▶ Asking Rate: \$18 - \$19/SF
- ▶ One of Downtown's Oldest Buildings
- ▶ On and Off-Site Parking Available
- ▶ Beautiful Loft Offices, Exposed Wood Ceilings, Skylights throughout and Great Character
- ▶ Conveniently Located in the Heart of Downtown Jacksonville, Just Blocks Away from the River
- ▶ ± 70,000 1-Mile Daytime Population

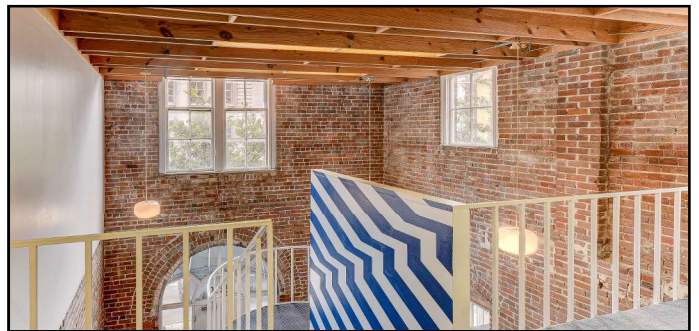




ABOUT

Second floor loft style office space for lease conveniently located in the heart of Downtown Jacksonville! Centered near the Main Street bridge and just blocks away from the St. John's River, The Livery Building is just a short walk from restaurants and the iconic Florida Theater. Features include exposed brick, high ceilings, natural light, and style. Parking is available on the next block!

INTERIOR PHOTOS





DEMOGRAPHICS

POPULATION

2021 Total Population:	12,424	85,840	206,269
Median Age:	42	39	39

HOUSEHOLDS

2021 Total Households:	4,389	35,555	85,155
Average Household Income:	\$38,189	\$36,372	\$40,642